

# Correction of Nipple Deformities; Nippleplasty

Laurence Kirwan MD FRCS FACS

Submitted to Aesthetic Meeting 2009

Las Vegas, NV

# Nipple Reduction

- For nipples that are either developmentally enlarged or enlarged after breast feeding.

# Nipple Areola

- Ideal nipple projection: one centimeter
- Ideal nipple diameter: half a centimeter
- Ideal areola diameter:  
38 mm to 42 mm.

# Nipple Areola in Men

- Ideal nipple projection: half a centimeter
- Diameter: half a centimeter
- Ideal areola diameter:  
10 mm to 15 mm.

# Nipple Reduction

- Technique appropriate for women and men. Can be combined with an areola reduction and other breast surgery such as breast lift, enlargement and reduction.

# Nipple Reduction

- Current techniques of *amputating* nipple or cutting partially in half and folding over the remaining half; do not work well in practice.

# Nipple Reduction

- Kirwan technique allows nipple reduction in a controlled and consistent fashion.

# Nipple Reduction

Excision of three or four segments like cake slices & repair with an absorbable suture.



# Nipple Reduction

## Potential complications

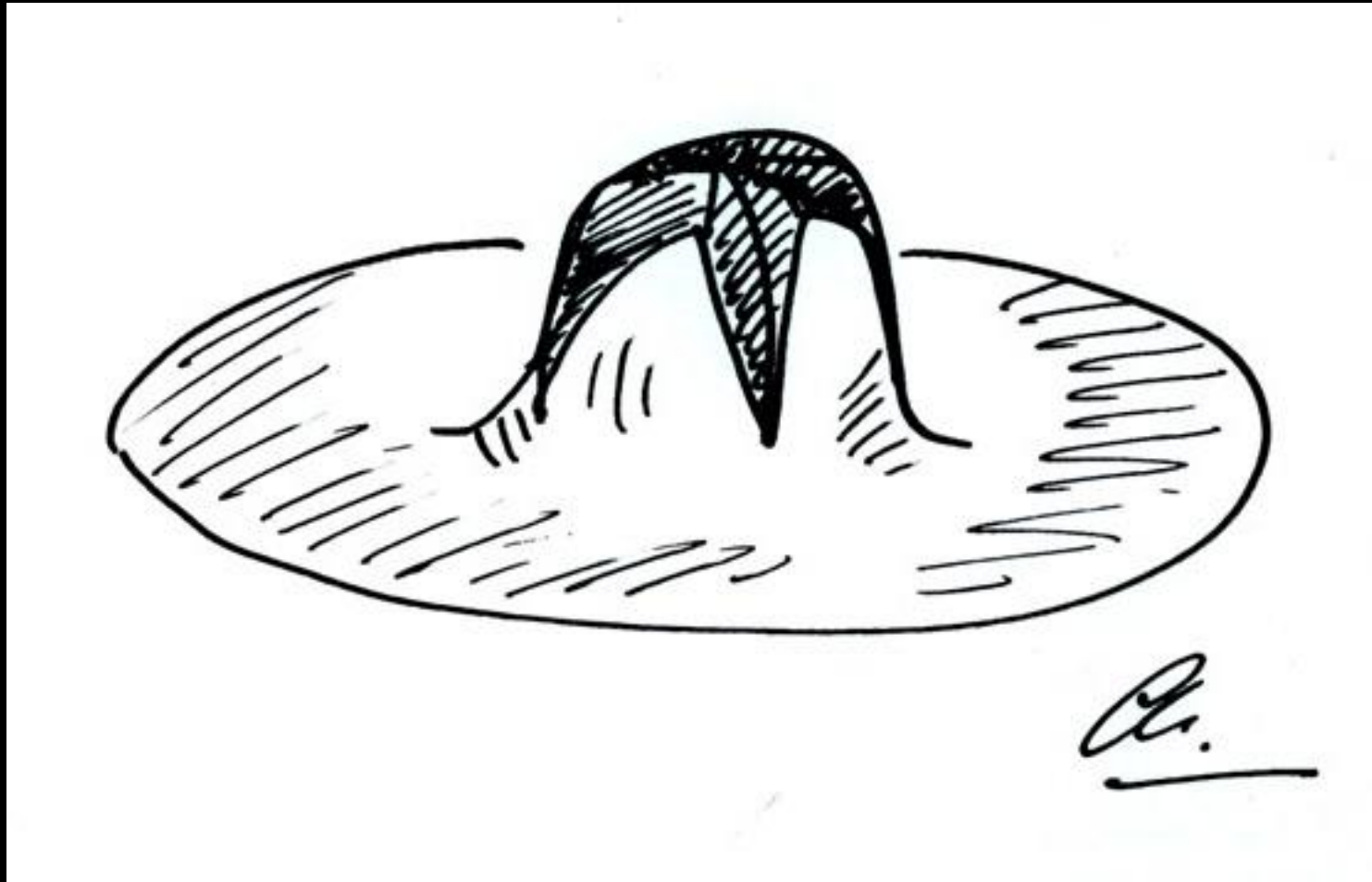
- over-reduction
- dehiscence of wound with resultant bifid nipple.
- blocked ducts with swelling of gland.
- increased or decreased nipple sensation.

# Nipple Reduction

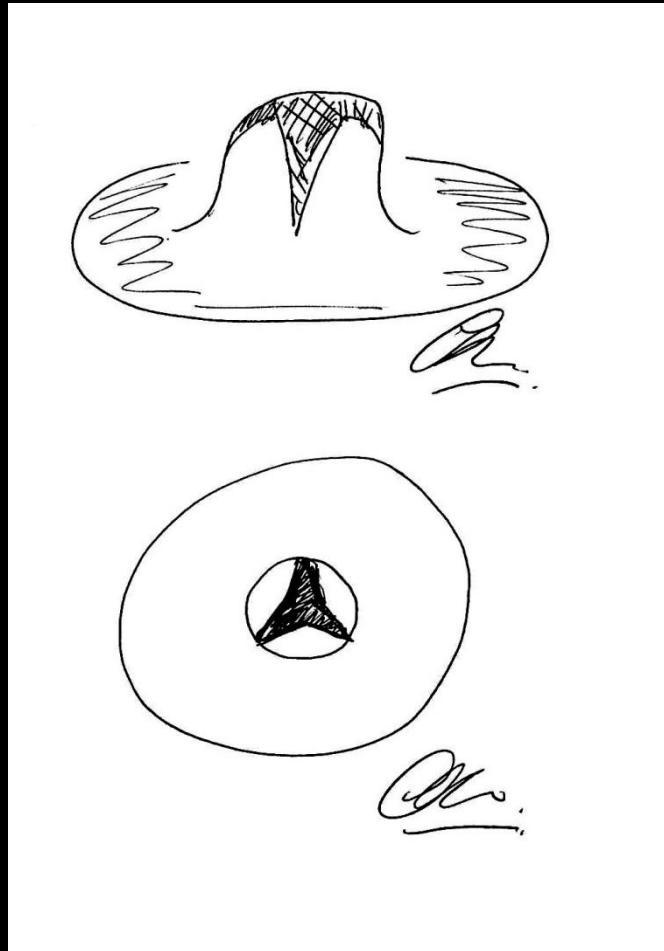
## Technique

- Mercedes pattern (3 slices)
- Pizza pattern (4 slices)
- Remaining segments are stitched together

# Nipple Reduction



# Nipple Reduction: Mercedes Technique



# Nipple Reduction Results



# Nipple Reduction



# Nipple Inversion

- Correction of the inverted nipple is a difficult problem evidenced by the number of techniques described in the literature.

# Nipple Inversion

- Primary pathology is shortening of the ducts relative to the size of the breast.



# Nipple Inversion

- Inversion may correct spontaneously with stimulation or temperature change.

# Nipple Inversion

- Treatment divides the ducts

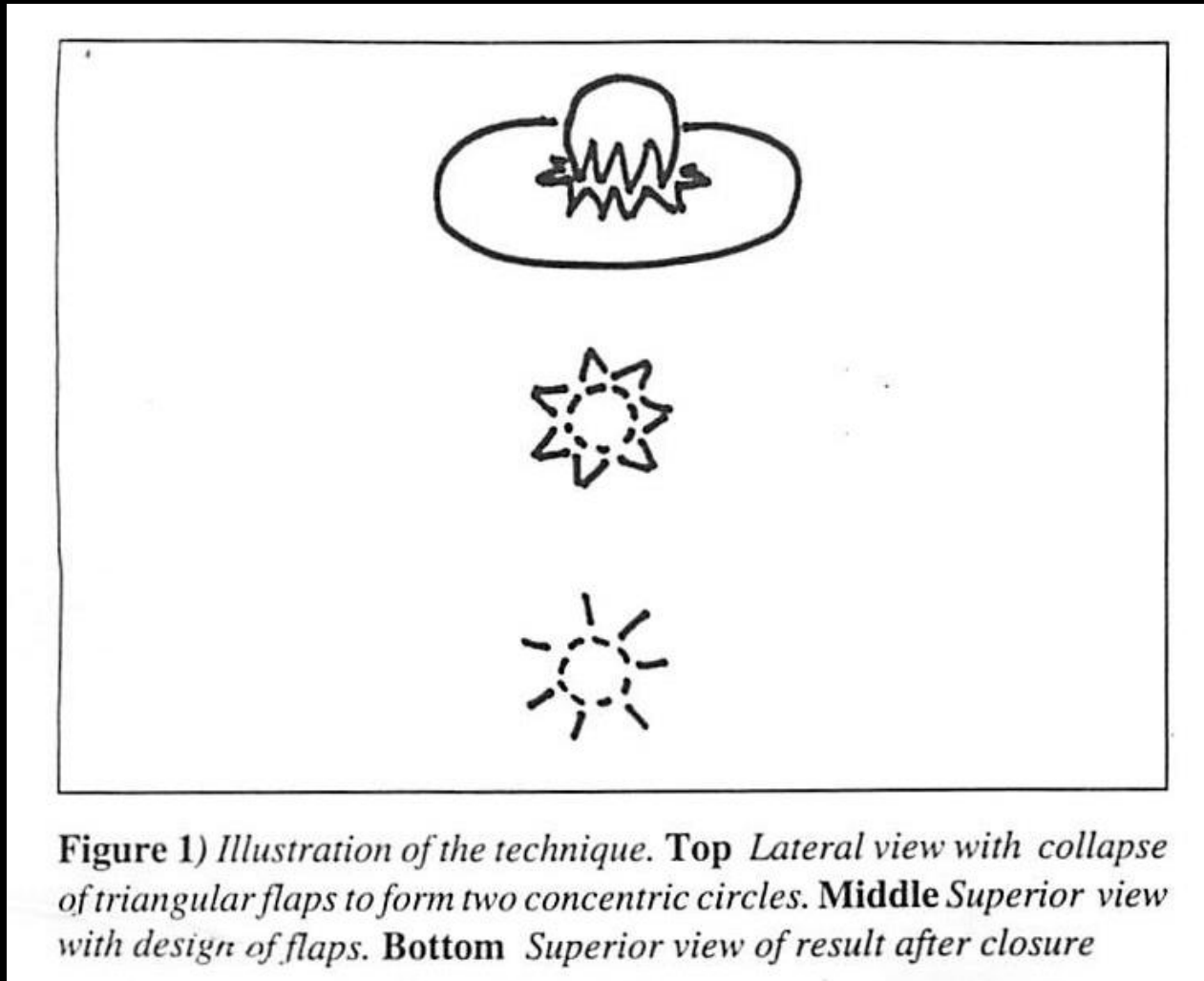
# Nipple Inversion

- Two Techniques
- Division of Ducts with Parachute Flap.
- Division of Ducts with Purse-string suture.

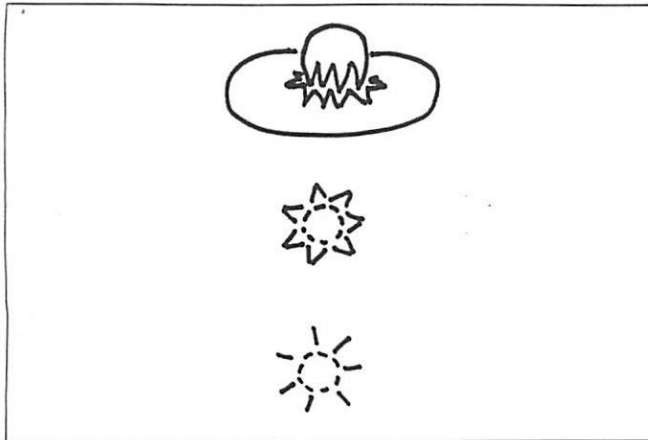
# Nipple Inversion

Kirwan L, Inverted Nipple and Nipple Reconstruction, the Parachute Flap, Canadian Journal of Plastic Surgery, September/October 7(5):233-236, 1999

# Nipple Inversion



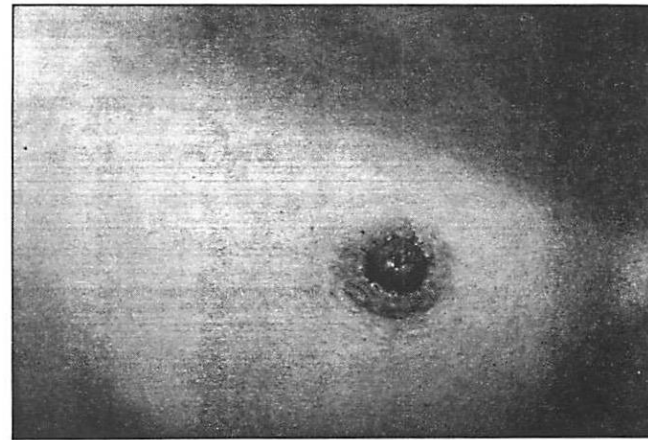
# Nipple Inversion



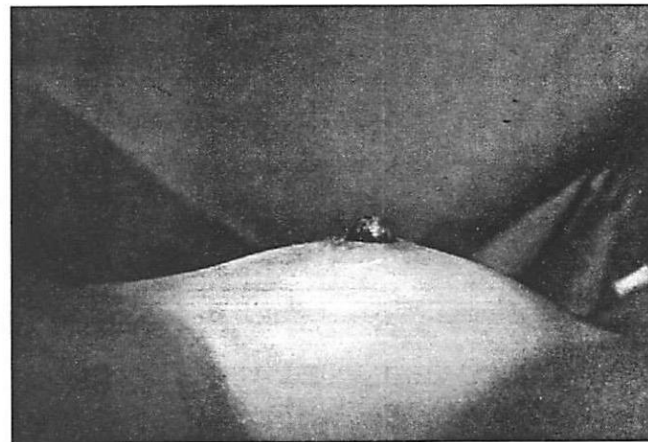
**Figure 1)** *Illustration of the technique. Top* Lateral view with collapse of triangular flaps to form two concentric circles. **Middle** Superior view with design of flaps. **Bottom** Superior view of result after closure



**Figure 2)** *Treating nipple inversions. Preoperative design of multiple triangular flaps around nipple*



**Figure 4)** *Treating nipple inversions. Postoperative frontal view*



**Figure 5 )** *Treating nipple inversion. Postoperative lateral view*

# The End

**Laurence Kirwan MD FRCS FACS**